



MINTON, TREHARNE
& DAVIES GROUP

YACHT DIVISION

WWW.MINTON.GROUP





MINTON, TREHARNE
& DAVIES GROUP

WHO ARE MINTON, TREHARNE & DAVIES?

The Minton, Treharne & Davies Group provide scientific consultancy, surveying and testing services to a worldwide client base. Having operated in the marine arena for over a century, MTD has an international reputation for delivering superior independent scientific, engineering, survey and testing services and expertise to industry.

YACHT DIVISION



MINTON, TREHARNE
& DAVIES GROUP

DIVERSE EXPERTISE

THE YACHT DIVISION AT MTD ARE REGULARLY INVOLVED WITH INVESTIGATING MARINE INCIDENTS FROM GROUNDINGS, COLLISIONS & FIRES, THROUGH TO STRUCTURAL FAILURES.

We have a wide and diverse range of expertise at our disposal both in terms of our staff and our in house facilities. We offer incident management services for on the spot advice to minimise losses. We can then manage a claim if required before moving to claim investigation, determining damages and costs to repair followed by investigating the root cause, subrogation options and future risk mitigation.

Historically, the core of Yacht Division instructions in the Marine sector have come from the Underwriting Market where we investigate incidents and claims regarding Commercial Ships and Pleasure Yachts.



EXTENSIVE RANGE OF WORLDWIDE CAPABILITIES

- Technical Consultants, Surveyors & Mariners
- Non Destructive Testing Engineers
- Fire Investigators
- Forensic Laboratories
- Engineering Failure
- Fuel and Lubrication Failure
- Paint and Fairing Failure





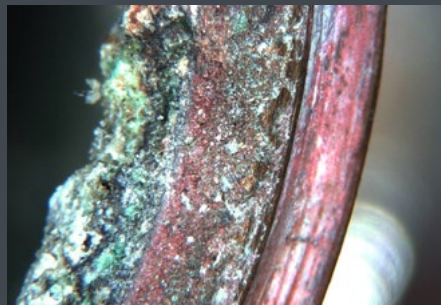
MINTON, TREHARNE
& DAVIES GROUP

We also carry out instructions directly on behalf of Owners, Yacht and Mast builders alike. We are an Independent Consultancy and welcome instructions from all areas.

We have a Non Destructive Testing, department at our head office in Cardiff that is capable of attending on-site inspections anywhere in the world. Our NDT engineers are fully qualified to

Aerospace standards, the most rigorous there are, and have extensive experience of marine/yacht structures.

Our Material Scientists can carry out detailed examinations of failed parts to determine the root causes of failure.





We have a very experienced and established fire investigations team who have been instrumental in determining the cause of many complex and difficult fire scenarios both in the commercial and pleasure marine sectors. To illustrate the range of cases we get involved in some past projects have included:-

- Mast Failures
- Hull Structural Failures Both High Tech Carbon Fibre and Low Tech Glass Reinforced Plastic
- New Build Quality Validation
- Yacht Fires
- Mechanical Failures to Engines and other Machinery
- Fuel Quality Issues
- Paint Failures

☎ +44 (0) 29 2054 0000
✉ yacht_division@minton.co.uk

UK

USA

SINGAPORE

AUSTRALIA

NETHERLANDS



MINTON, TREHARNE
& DAVIES GROUP

Minton, Treharne & Davies Group
Forest Farm Industrial Estate, Coryton,
Cardiff CF14 7HY, United Kingdom.

+44 (0) 29 2054 0000
+44 (0) 29 2054 0111
enquiries@minton.co.uk

WWW.MINTON.GROUP